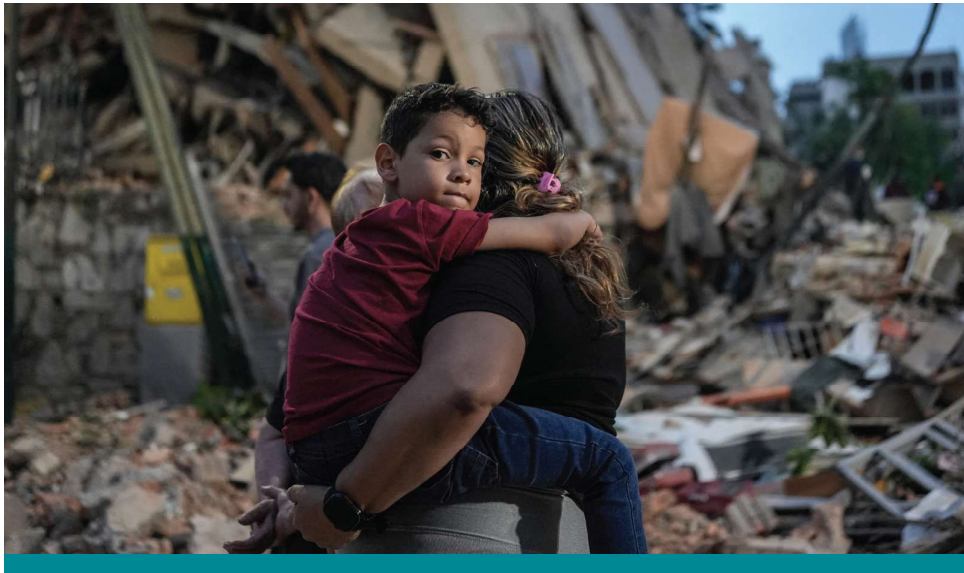
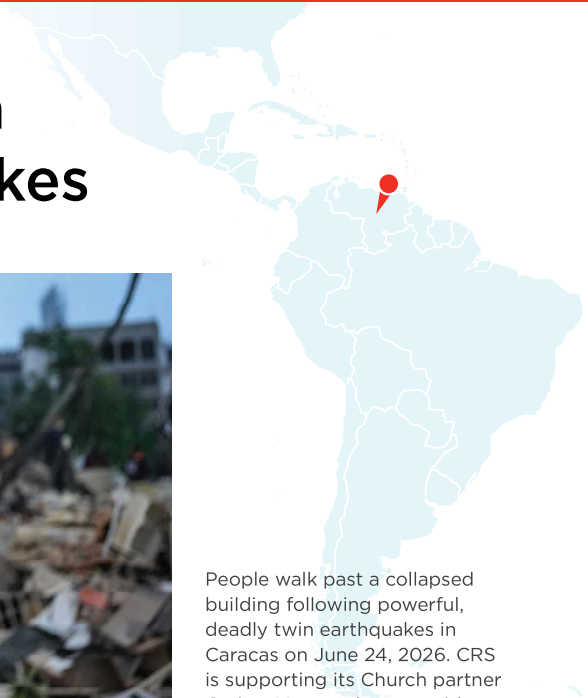


CRS and Caritas Venezuela Respond to Twin Earthquakes



People walk past a collapsed building following powerful, deadly twin earthquakes in Caracas on June 24, 2026. CRS is supporting its Church partner Caritas Venezuela to provide urgent relief. The earthquakes are considered the country's worst in more than a century.

Photo by Maneure QUINTERO / AFP via Getty Images

Context

On June 24, 2026, two powerful earthquakes struck northern Venezuela just seconds apart, causing widespread destruction across Caracas and surrounding states. The twin earthquakes—the strongest to strike the South American country in decades—flattened buildings, damaged roads and left families searching for safety. Within the first 12 hours, more than 160 deaths were reported, nearly 1,000 people were injured, and thousands of families were displaced. These numbers are sure to rise as the full extent of the damage becomes clearer. As aftershocks continued, the president

declared a state of emergency, schools and non-essential services were suspended, and Caracas' airport was temporarily closed after sustaining heavy damage.

As search and rescue efforts continue, Catholic parishes in Venezuela have opened their doors to shelter displaced families and provide emergency assistance. Through its longstanding partnership with Caritas Venezuela, CRS is supporting rapid assessments and preparing to deploy additional humanitarian workers to expand lifesaving relief for people who have lost homes, livelihoods and a sense of security.

How to Help



Donate online: crs.org/donate/venezuela-earthquake



Donate by scanning the QR code:



Donate by phone:
1-877-HELP-CRS



Donate by check:
CRS/Venezuela Earthquakes
P.O. Box 5278, Tipton, IA 52772-0517

Emergency Relief Priorities

The earthquakes have intensified humanitarian needs in a country already facing one of the region's worst humanitarian crises. An estimated 7.9 million people were already in need of assistance due to years of economic crisis, food insecurity and weakened public services.



CRS and Caritas Venezuela are working to provide earthquake-affected families with critical aid, including:

- Emergency shelter and essential household items
- Food assistance
- Safe water, sanitation and hygiene
- Emergency health and trauma care
- Mental health and emotional support
- Protection for vulnerable populations, particularly children, older adults and people with disabilities

CRS and Caritas Venezuela Response

CRS is responding alongside our long-standing partner Caritas Venezuela, whose nationwide network provides a far-reaching, trusted and effective presence in affected communities.



CRS has partnered with Caritas Venezuela for decades ... Together, we are already working to improve food security, nutrition, livelihoods and water systems in vulnerable communities across the country.

Together, CRS and Caritas Venezuela are working to quickly identify urgent needs, coordinate with humanitarian partners and deliver lifesaving assistance to the communities hardest hit by the earthquakes. Families who have lost their homes—or cannot safely return because of damage and aftershocks—need shelter, food, clean water and other essentials. Some are also grieving loved ones or caring for injured family members as they try to recover from the shock of the disaster. CRS and Caritas Venezuela will prioritize those facing the greatest risks, including children, older adults, pregnant and nursing women, people with disabilities and other vulnerable groups.

Recognizing the emotional toll of the earthquakes, CRS and Caritas Venezuela are providing emotional support and counseling alongside emergency assistance to help families cope with trauma and loss. This assistance is being delivered through rigorous monitoring, accountable supply chain tracking, and strong community engagement and feedback—all backed by CRS' experience managing complex emergencies that meet the highest standards for accountability.

A Long-standing Partnership

Caritas Venezuela is one of the country's largest and most trusted humanitarian organizations. With a nationwide structure spanning national, diocesan and parish levels and a permanent presence in communities across the country, it is often the first to respond when disaster strikes. This extensive network enables CRS and Caritas to work closely with parish priests, lay leaders, health facilities, schools and community organizations, helping reach vulnerable families in informal urban settlements, remote rural areas and Indigenous territories where humanitarian coverage is often limited.

CRS has partnered with Caritas Venezuela for decades to strengthen local capacity and respond to humanitarian needs. Together, we are already working to improve food security, nutrition, livelihoods and water systems in vulnerable communities across the country. Our partnership and preparations are what enable us to provide lifesaving assistance in response to this latest catastrophe.

Looking Ahead

As needs evolve, CRS and Caritas Venezuela will continue to adapt the response to address the most urgent priorities while supporting communities through the early stages of recovery. The response will focus on expanding lifesaving assistance to families affected by the earthquakes and providing critical support as they begin rebuilding their lives.